

SAMSUNG

WIRELESS RECEIVER

SWA-3000

SERVICE Manual

WIRELESS RECEIVER

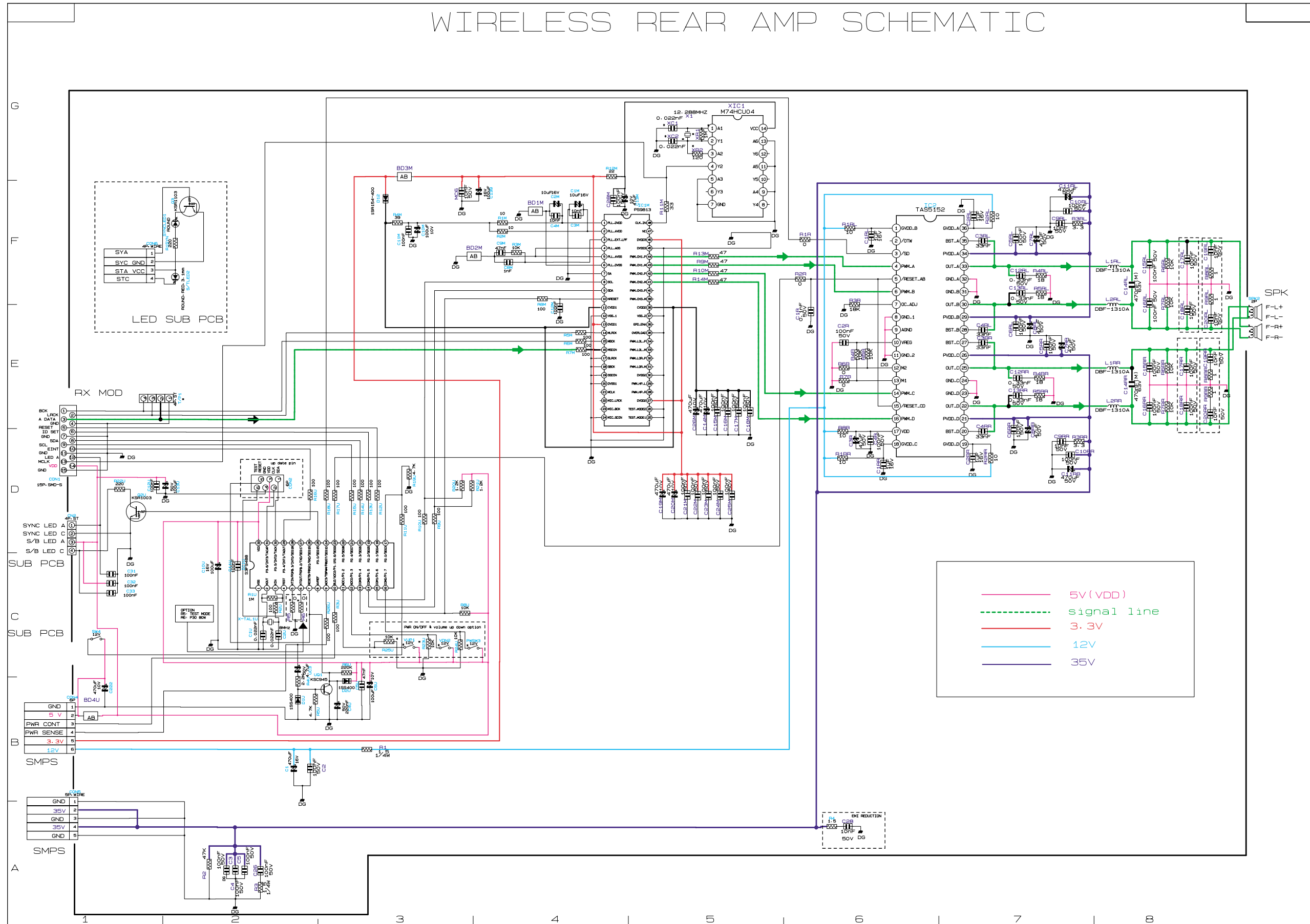


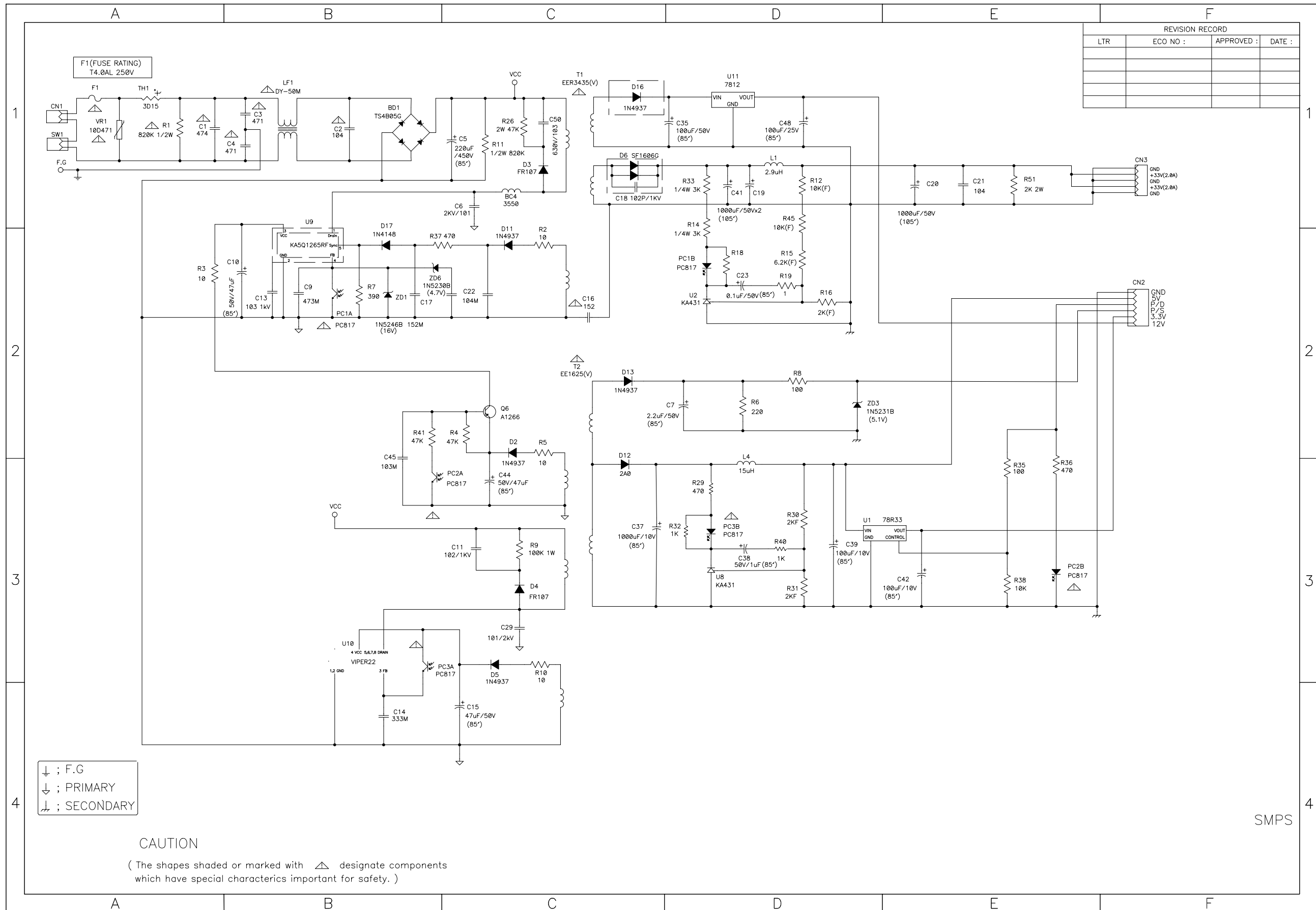
CONTENTS

1. Exploded Views and Parts List
2. Disassembly and Reassembly
3. Electrical Parts List
4. Schematic Diagrams

- Confidential -

WIRELESS REAR AMP SCHEMATIC





3. Electrical Parts List

Location no.	Code no.	Description & Specification	Remarks	Location no.	Code no.	Description & Specification	Remarks
C1	2401-001364	C-AL;470uF,20%,16V,GPTP;10x12.5,5					
C10U	2401-000042	C-AL;100uF,20%,16V,GPTP;6.3x7.5					
C11RL	2401-003069	C-AL;470uF,20%,50V,WT,TP;10x20mm,5					
C13M	2401-001975	C-AL;47uF,20%,16V,GPTP;5x11mm,5mm					
C13RR	2203-000787	C-CER,CHIP;0.33nF,5%,50V,COG,TP;2012					
C13U	2401-000357	C-AL;100uF,20%,50V,GP,-,8x11.5,3.5mm					
C14RL	2305-000412	C-FILM,LEAD-PEF;470nF,5%,63V,TP,-,5mm					
C1R	2203-000236	C-CER,CHIP;0.1nF,5%,50V,COG,1608					
C1U	2203-000626	C-CER,CHIP;0.022nF,5%,50V,COG,1608					
C20RR	2203-000257	C-CER,CHIP;10nF,10%,50V,X7R,1608					
C22Z	2401-001355	C-AL;470uF,20%,10V,GPTP;8x11.5mm,5					
C2M	2401-000407	C-AL;10uF,20%,16V,GPTP;3.5x5,2.5					
C2RR	2203-002793	C-CER,CHIP;1000nF,+80-20%,25V,Y5V,2012					
C4RR	2203-001634	C-CER,CHIP;33nF,10%,50V,X7R,1608					
C4U	2401-000752	C-AL;220nF,20%,50V,GPBK,3x5,1mm					
C5RR	2203-005249	C-CER,CHIP;100nF,10%,50V,X7R,1608					
C5U	2203-000972	C-CER,CHIP;47nF,10%,16V,X7R,1608					
C6U	2401-000240	C-AL;100uF,20%,10V,GPTP;5x11,5					
C8M	2203-000440	C-CER,CHIP;1nF,10%,50V,X7R,1608					
C8RR	2401-002300	C-AL;47uF,20%,50V,GPTP;6.3x11,5					
CD060	AH61-02177A	BRACKET-GUIDE;SWA-3000,SECC,1.0,-,-,-,-					
CN2	3711-000028	HEADER-BOARD TO CABLE-BOX;4P1R,2MM,STRA					
CON1	3708-001837	CONNECTOR-FPC/FPC/PIC;15P;1mm,SMD-S,Sn-P					
CON2	3708-000303	CONNECTOR-FPC/FPC/PIC;6P;1.25MM,STRAIGHT					
CON4	AH39-00744A	LEAD CONNECTOR;SWA-2000,6-6,2mmpitch,7					
CON5	AH39-00745A	LEAD CONNECTOR;SWA-2000,5-5,2.5mmpitch,					
CON6	AH39-00743A	LEAD CONNECTOR;SWA-2000,4-4,2mmpitch,1					
D12	0402-000309	DIODE-RECTIFIER;1SR154-400,400V,1A,SOD-1					
D2U	0401-001110	DIODE-SWITCHING;-80V,100MA,SOD-523,TP					
IC1M	1204-002392	IC-MODULATOR;PS9813,TSSOP;46P;12.5x6.1mm					
IC1U	0903-001414	IC-MICROCONTROLLER;S3F9488XZ-SOB8,8Bit,					
IC2	1201-002236	IC-AUDIO AMP;TAS5152,PSOP3,36P;15.9x11mm					
L2RL	AH27-00055A	COIL-CHOKE;DBF-1310A,HT-DS600,10uH,-,-,2					
Q2U	0504-000118	TR-DIGITAL;KSR1003,NPN,300MW,22K/22K,TO-					
Q3	0504-000128	TR-DIGITAL;-NPN,200MW,22K/22K,SOT-23,TP					
R1	2007-000253	R-CHIP;1.5ohm,5%,1/4W,TP;3216					
R10M	2007-000072	R-CHIP;47ohm,5%,1/10W,TP;1608					
R11M	2007-000113	R-CHIP;33ohm,5%,1/10W,TP;1608					
R12M	2007-000071	R-CHIP;22ohm,5%,1/10W,TP;1608					
R1M	2007-000309	R-CHIP;10ohm,5%,1/10W,TP;1608					
R1R	2007-000070	R-CHIP;0ohm,5%,1/10W,TP;1608					
R1RL	2007-000312	R-CHIP;10ohm,5%,1/4W,TP;3216					
R1SYN	2007-000075	R-CHIP;220ohm,5%,1/10W,TP;1608					
R1U	2007-000475	R-CHIP;1Mohm,1%,1/10W,TP;1608					
R2	2007-000941	R-CHIP;47Kohm,5%,1/8W,TP;2012					
R20U	2007-000122	R-CHIP;1.2Kohm,5%,1/10W,TP;1608					
R2SYN	2007-000052	R-CHIP;10Kohm,1%,1/10W,TP;1608					
R3R	2007-000455	R-CHIP;18Kohm,1%,1/10W,TP;1608					
R3RR	2007-000693	R-CHIP;3.3ohm,1%,1/10W,TP;1608					
R4	2007-001806	R-CHIP;1.5ohm,5%,1/10W,BK,1608					
R4M	2007-000116	R-CHIP;120ohm,5%,1/10W,TP;1608					
R4R	2007-000090	R-CHIP;10Kohm,5%,1/10W,TP;1608					
R4U	2007-000124	R-CHIP;2.2Kohm,5%,1/10W,TP;1608					
R5RR	2007-000462	R-CHIP;18ohm,5%,1/8W,TP;2012					
R5U	2007-000084	R-CHIP;4.7Kohm,5%,1/10W,TP;1608					
R6M	2007-000074	R-CHIP;100ohm,5%,1/10W,TP;1608					
R6U	2007-000106	R-CHIP;220Kohm,5%,1/10W,TP;1608					
R8RL	2007-002425	R-CHIP;1ohm,5%,1/10W,TP;1608					
S/TLE	0601-001238	LED;LTL-1CHESS-UA,ROUND,RED,3.1mm,697nm					
SPK1	3716-001244	TERMINAL-BLOCK;-2P;4.5mm,-,-					
SW4	3404-001278	SWITCH-TACT;12V,DC,50mA,180gf,7.5x10.6x7					
SYNCL	0601-001432	LED;ROUND,BLUE,3mm,455nm					
UC3	2401-000027	C-AL;4.7uF,20%,50V,GPTP;5x11,5					
UQ1	0501-002409	TR-SMALL SIGNAL;KTC945B,NPN,625MW,TO-92					
X-TAL	2801-003139	CRYSTAL-UNIT;8MHz,50ppm,28-AAA,22pF,80oh					
	AH61-02155B	STAND-WIRELESS;SWA-3000,HIPS,-,-,-,-,-					
	AH64-03951A	WINDOW-DECO;SWA-3000,PMMA T3.0,-,-,-,-,-					
	3301-000132	CORE-FERRITE;AC,28.8x19.3x7.5mm,1400,290					
	3809-001721	CABLE-FLAT;30V,80C,40mm,15P;1.0mm,UL2896					
	AH34-00019A	SWITCH-POWER ASSY;KJTS04-143,JRA1102R,NY					
	AH39-00257D	CBF-POWER CORD;KOR,-,CP2,250V,3A,1830MM					
	AH40-00105A	RF MODULATOR;BTW200Rx,AFS,72,-,10.5,105,					
	AH40-00131C	RF MODULATOR;-,-,79,-,10mW,5V,10-50,-,-					
	AH44-00080A	SMPS;SWA-2000,ORTP-984,AC to DC,200					
	AH68-00967Q	LABEL CAUTION;SWA-3000,-,-,-,-,-,-,-,-,-					
	AH81-02137A	A/S PART-SPEAKER WIRE;SWA-3000,-,-,Speak					
	AH92-02357A	ASSY PCB-WIRELESS PCB;SWA-2000,WIRELESS					

2. How to disassemble

* CAUTIONS

1. To avoid damage to the product, follow the disassembly method in the Service Manual.
2. As some Semiconductor devices are very sensitive to static, ensure that all procedures are adhered to when handling ESD's.

1. Remove 3 screws on bottom side.



2. Remove 2 screws on rear side.



3. Take out the power cable.



4. Take off window part on front side.

(Window part was attached by double side tape.
Be careful that window can be broken.)



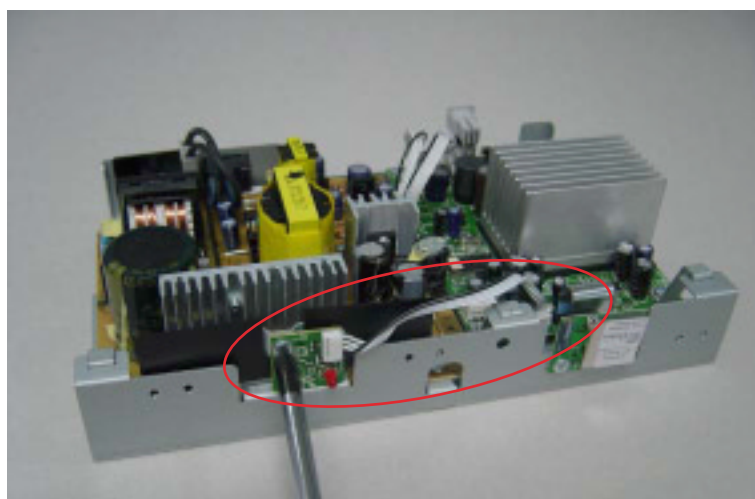
5. Remove the decoration-window.



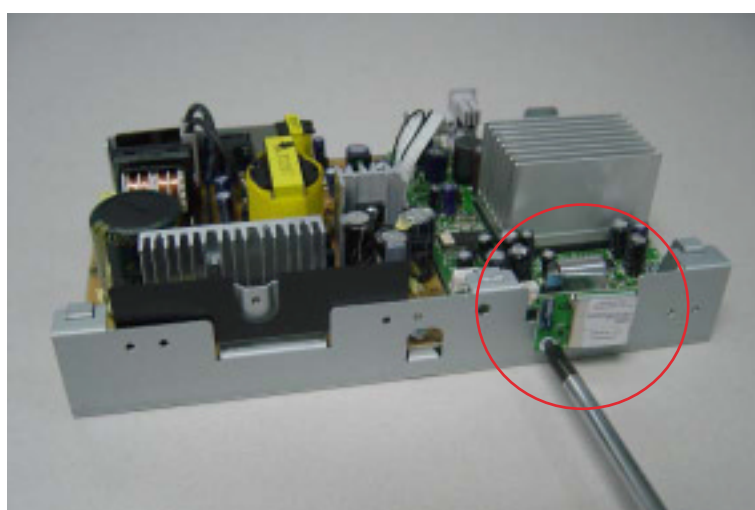
6. Remove 3 screws on front side.



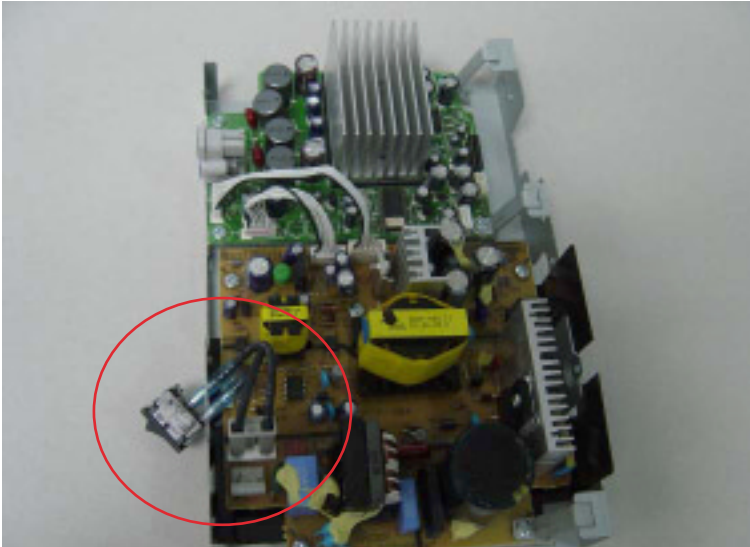
7. Remove a screw and LED-PCB.



8. Remove a screw and RF-PCB.



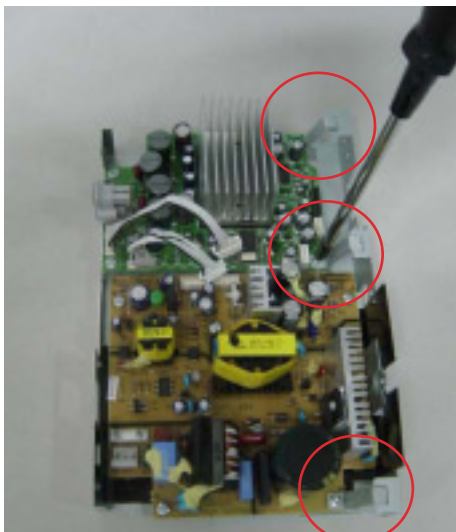
9. Remove the power switch.



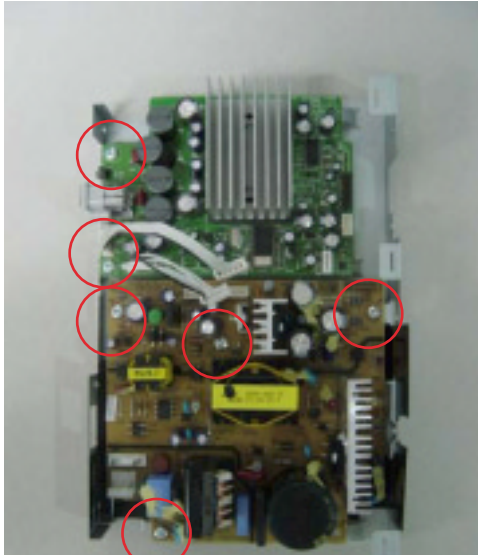
10. Take off 2 connectors.



11. Remove 3 screws and 3 brackets.



12. Remove 6 screws.



13. Remove a sheet.

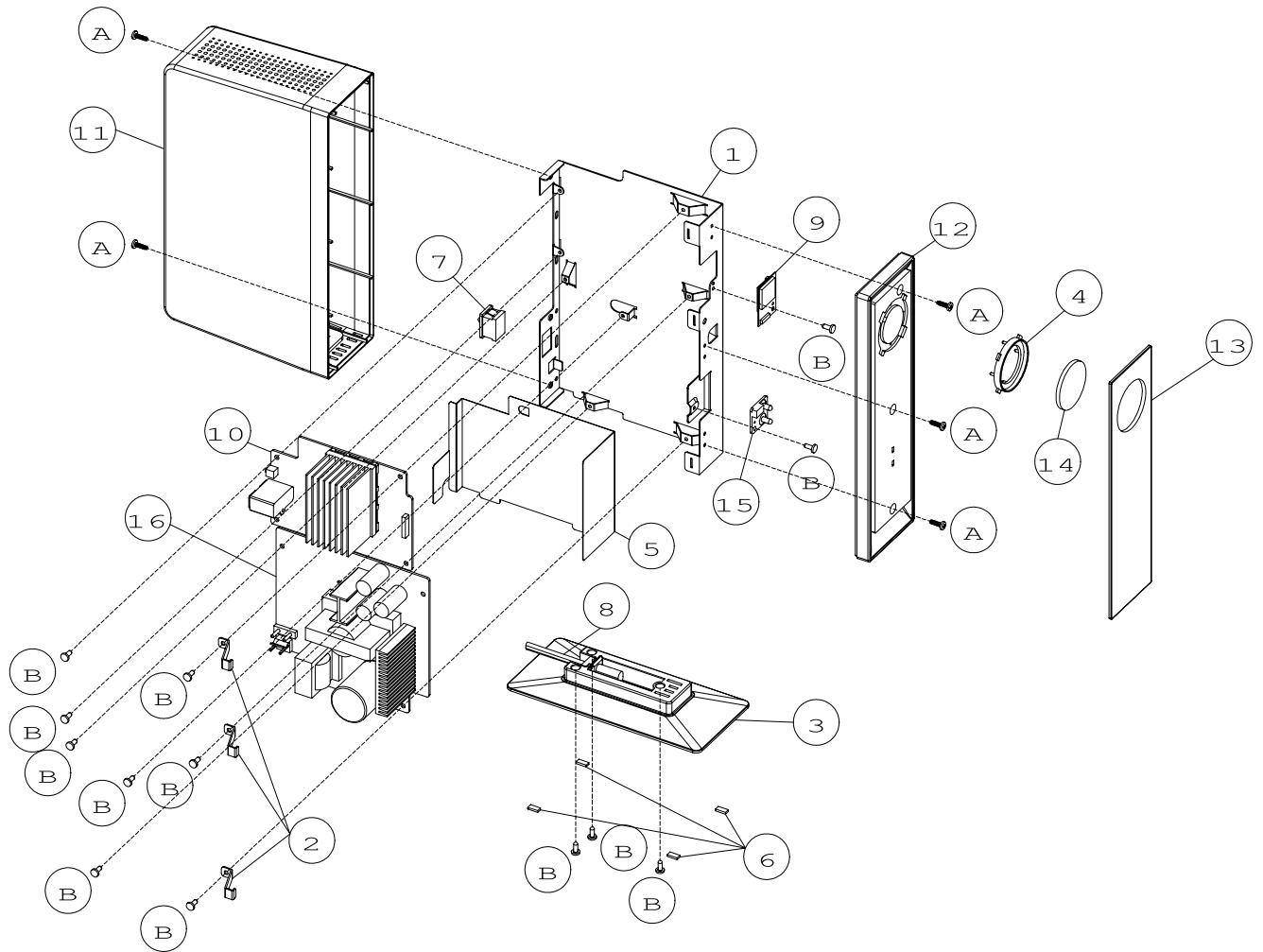


14. End.



1.Exploded Views and Parts List

* SWA-2000 Exploded View



No.	Code No.	Description	Specification	QTY	Remark
1	AH61-02156A	BRACKET-PCB	SECC T0.8	1	
2	AH61-02177A	BRACKET-GUIDE	SECC,1.0	3	
3	AH61-02155B	STAND-WIRELESS	HIPS	1	
	AH61-02155C		HIPS(WHITE) (V-0)		
4	AH64-03950B	DECORATION-RING	ABS	1	
5	AH63-00805H	SHEET-SMPS	PC 94V-2,0.5T	1	
6	AH73-00102A	RUBBER FOOT	RUBBER	4	
7	AH34-00019A	SWITCH-POWER ASSY	KJTS04-143	1	
8	AH39-00258J	CBF-POWER CORD	EP2,UL	1	
9	AH40-00105A	RF MODULATOR	BTW200Rx,AFS	1	
10	AH41-00843A	PCB-AMP	PHENOL,AMP	1	
11	AH64-03948B	CABINET-BACK	HIPS(V-2)	1	
	AH64-03948C		HIPS	1	
	AH64-03948E		PC+ABS(WHITE)	1	
	AH64-03948F		PC+ABS(WHITE) (V-0)	1	
12	AH64-03947B	CABINET-FRONT	HIPS (V-2)	1	
	AH64-03947C		HIPS	1	
	AH64-03947D		PC+ABS(WHITE)	1	
	AH64-03947F		PC+ABS(WHITE) (V-0)	1	
13	AH64-03949A	WINDOW-FRONT	ACRYL - SAMSUNG	1	
	AH64-03949B		ACRYL - PAVV	1	
	AH64-03949C		ACRYL - SAMSUNG	1	
	AH64-03949D		ACRYL - PAVV	1	
14	AH64-03951A	WINDOW-DECO	ACRYL	1	
	AH64-03951B		ACRYL	1	
15	AH40-00131A	RF MODULATOR	79,-,10mW,5V,-10~50	1	
16	AH44-00080B	SMPS		1	
A	6003-000275	SCREW-TAPTITE	BH,+,-,B,M3,L10,ZPC(BLK)	5	
B	6003-001375	SCREW-TAPTITE	BH,+,-,B,M3,L8,ZPC(YEL)	14	